



**AL SARAWAT**  
FOR CONTRACTING AND SUPPLIES

Oil & Gas

Petrochemicals

Fertilizers

Cement

Metal

Marine



**YOUR COMPANION TO SUCCESS**



[www.alsarawatco.com](http://www.alsarawatco.com)

## TABLE OF CONTENT

---

<b>Industries</b>	<b>03</b>
<b>Scope of Supply</b>	<b>03</b>
General Electro-Eechnical Equipment's/Spare Parts	04
Piping & Fittings	06
Valves	08
Fluid Handling Systems	10
Chemical Injection Product Line	12
Aircraft Warning Lights	14
Skids	16
<b>Our Partners and Our Satisfied Customers</b>	<b>18</b>
<b>Company Strategy</b>	<b>19</b>

# INDUSTRIES

- Oil & Gas
- Petrochemicals
- Power
- Fertilizers
- Cement
- Metal
- Marine

# SCOPE OF SUPPLY

- General Electro-Mechanical  
Equipment's/Spare Parts
- Piping & Fittings
- Valves
- Fluid Handling Systems
- Chemical Injection Product Line
- Aircraft Warning Lights
- Skids





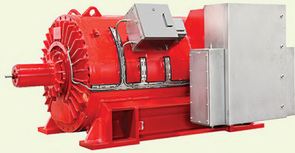
## GENERAL ELECTRO- MECHANICAL EQUIPMENT'S/ SPARE PARTS

Our goal is to seek the best solutions for the supply of original brand new and unused materials offering competitive prices and all necessary technical documentation to make sure that our offer is in accordance with the original requirements. Furthermore, our priority is to study suitable solutions for each customer.

## Scope

### Motors:

- AC Induction Machines
- MV Motors
- DC Machines
- Explosion Proof Machines
- Synchronous Machines
- Gear box



### Instrumentation & Accessories:

- Control systems
- Pressure gauges
- Transmitters



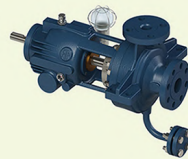
### Electrical Equipment:

- Lighting
- Sockets and Plugs
- Circuit breaker and Relay
- Fuses
- Cables
- Transformers



### Compressors & Spares:

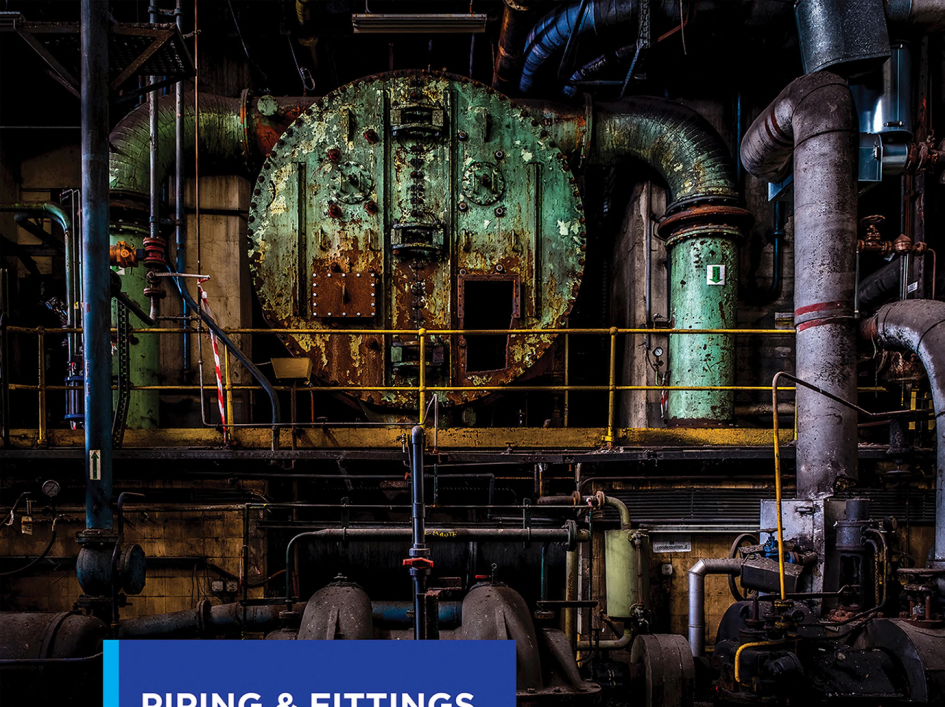
- Air compressor
- Reciprocating gas compressor
- Filters
- HAVC



### Tools:

- Hand tools
- Power tools
- Diagnostics
- DPI & Accident Prevention
- Safety materials
- Firefighting materials





## PIPING & FITTINGS

Our focus is towards those Clients that needs to procure these products from a single source, for all of them together, and we are proud to say that this is our Job!

One order covering many typologies can be of extremely useful service when the combination of <Quality - Assortment - Price> is the Client's target, we can say that this is our focus too and the result is guaranteed.

Now we take the opportunity to list,  
for an easier and quick knowledge,  
the products we deal with:

- Butt-welding steel fittings
- Forged steel flanges
- Forged steel fittings
- Studs bolts and nuts
- Gaskets
- Valves
- Steel line pipes, Heat Exchanger Tubes, plates, bars, screens etc.
- Steel Casing and Tubing
- Monolithic insulating joints and flange insulating kits
- Pigging Traps & Quick Closures, Prefabrication





# VALVES

## STANDARD & SPECIAL



Gate Valves



Globe Valves



Safety Valves





Ball Valves



Butterfly Valves



Control Valves



Needle Valve



Regulating Valves



Special Valves



Check Valves

# FLUID HANDLING SYSTEMS

## Fluid handling Systems Contractor's Equipment

- Paint sprayers
- Spray foam equipment
- Abrasive blasting equipment
- Fine finish sprayers
- Line stripers
- Protective coating equipment



## Industrial, Manufacturing & Processing:

- Liquid finishing
- Sealants
- Lubrication
- Sanitary
- Chemicals
- General fluid transfer



# CHEMICAL INJECTION PRODUCT LINE

Graco chemical injection pumps are exactly what experienced oil and natural gas industry professionals want and need to meet the ongoing challenges of transferring chemicals in harsh and often remote geographies. The product line includes solar DC, electric AC and pneumatic operated pumps as well as technologically advanced controllers and accessories to dispense, control, and monitor production chemicals at well sites, refineries and pipelines.

- Solar Powered Chemical Injection pumps and equipment
- Electric Chemical Injection Pumps
- Pneumatic Chemical Injection Pumps
- Pumpjack powered chemical injection pumps
- Pump Controllers & Tank Level Monitoring
- Remote Communication and Automation



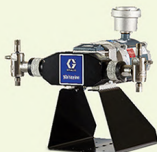
## ELECTRIC/SOLAR POWERED

**Wolverine®**

- Ordinary Location
- 1/11 hp and 1/5 hp motors
- 370 GPD (1400 LPD)
- 10,000 PSI (690 Bar)

**Wolverine Variable Speed**

- Class 1, Div. 2
- Continuous injection
- Brushless motor
- 370 GPD (1400 LPD)
- 10,000 PSI (690 Bar)

**Wolverine Hazardous Location**

- Class 1, Div. 1
- ATEX approved
- 370 GPD (1400 LPD)
- 10,000 PSI (690 Bar)

**Wolverine DA**

- Double acting
- Self-priming
- Variable Speed (CID2)
- 555 GPD (2100 LPD)
- 2,500 PSI (172 Bar)

## PNEUMATIC

**Python®**

- 3 air motor sizes
- 50 PSI min inlet
- 169 GPD (640 LPD)
- 12,000 PSI (827 Bar)

**Python XL**

- 3 air motor sizes
- 15 PSI min inlet
- 370 GPD (1400 LPD)
- 12,000 PSI (827 Bar)

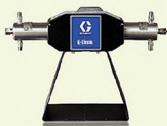
**Python XL-DA**

- Double acting
- Self-priming
- 700 GPD (2650 LPD)
- 12,000 PSI (827 Bar)

**Python XL-DA25**

- Double acting
- Self-priming
- 2.5 inch stroke
- 1,615 GPD (6113 LPD)
- 7,500 PSI (517 Bar)

## ENTRY LEVEL PUMPS

**G-Chem™**

- Ordinary location
- 1/7 hp motor
- 66 GPD (250 LPD)
- 2,500 PSI (172 Bar)

**G-Chem Beam**

- Powered by well site pump jack
- Same fluid heads and drive housing as the G-Chem electric
- 20 GPD (76 LPD)
- 2,500 PSI (172 Bar)

**Mongoose™ Chemical Metering Pump**

- Low pressure/low flow rate application
- Poppet or Graco check valves
- Stainless steel and kynar fluid heads
- 45 GPD (170 LPD)
- 250 PSI (17 Bar)

**G-JR**

- Simple design
- Easy to operate
- Optimized for 8 GPD
- 2000 psi
- Harrier EZ-JR controller



## AIRCRAFT WARNING LIGHTS

### Aircraft Warning Systems ACWS:

- Aircraft warning lights for vertical obstacles.
- Aircraft warning lights for hazardous areas.
- Weatherproof warning lights and explosion proof warning lighting.
- Explosion-proof warning lights are installed in hazardous areas, typically in Oil & Gas field applications.
- Flare stacks
- Chimneys
- Cranes
- Storage tanks
- Oil & Gas rigs and offshore.



- Obstruction lights are installed on top of tall structures (building, towers, bridges) and are used as collision avoidance measure.
- Lamps comply to ICAO (International Civil Aviation Organization) and FAA (Federal Aviation Administration) regulations.
- High buildings
- Telecommunications towers
- Water Tanks
- Chimneys
- Power lines
- Cooling towers
- Cranes
- Heliport lights are installed around the surface of final approach and take-off area (FATO) and around the touchdown and lift-off area (TLOF) of helipads or heli-decks. Lamps comply to ICAO (International Civil Aviation Organization).
- Rooftop heliports
- Surface-level heliports
- Helipads on offshore platforms
- Helidecks on shipboards Conductor marking lights increase night conspicuity of transmission line catenary wires near airports, heliports, across rivers.
- Lamps mark and light overhead power lines support structures (towers) as well as high voltage transmission line catenary wires.
- Transmission towers
- Overhead power lines





## SKIDS

### PROCESS PACKAGES / SYSTEMS

- Oil and Gas Separation & Treatment (Trains & Packages)
- Fuel Gas Conditioning / Treatment Packages
- Electrostatic Dehydrators (Desalters)
- Gas Dehydration and Regeneration Packages (TEG - Mole Sieves)
- Gas Sweetening and Regeneration Packages
- NGL Recovery Systems
- Gas Compression Systems (Trains & Packages)
- Hot Oil Systems
- Direct Fired Heaters & Indirect Fired Heaters
- Chemical Injection Packages
- Water Injection Systems (Trains & Packages)
- Flare Tips and Flare System



## INSTRUMENTATION PACKAGES

- Oil & Gas Metering Systems (Custody and Non-Custody)
- Wellhead Control Panels
- Prefabricated Shelters (Control Rooms, Electrical Rooms, Analyzing Shelters)

## PRESSURE EQUIPMENT

Designed and Certified in full accordance with Customer Specifications and International standards: ASME U / U2 stamp, PED, API, GOST, GOSPROMNADZOR etc.

- Refinery Reactors: Alkylation, Cracking, Hydrocracking, Hydrotreating, Isomerization, reforming etc.
- Columns: Distillation, Stripping, Splitters, Adsorption, Fractionation, Distillation, Stabilization, Vacuum, etc.
- Slug Catchers: Vessel Type, Finger Type, Parking Loop Type inclusive of Internals and Process Performance Guarantees
- Process Separators: 2-Phase, 3-Phase, Vertical, Horizontal inclusive of Internals and process Performance Guarantees
- Direct and Indirect Fired Heater
- Waste Heat Recovery Units
- Shell & Tube Heat Ex-changers

## POWER PLANTS

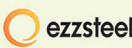
- Biomass Co-generative Plants
- Heat Recovery Units
- Biomass Boilers
- Burners and Afterburners



## OUR PARTNERS



## OUR SATISFIED CUSTOMERS



---

We are Egyptian company specialized in Electro-mechanical contracting and supplies working in the Egyptian market.

# COMPANY STRATEGY

---



Purpose to be a leader in the supply business by providing solutions matching customer's most demanding requirements from the best European qualified manufacturers.



Vision to provide quality services that exceeds the expectations of our esteemed customers.



Mission statement to build long term relationships with our customers and clients and provide exceptional customer services by pursuing business through innovation and advanced technology.



Core values we believe in treating our customers with respect and faith. We grow through creativity, invention and innovation. We integrate honesty, integrity and business ethics into all aspects of our business functioning.



Goals Regional expansion in the field of electromechanical and develop a strong base of key customers.

### Eng. Mohamed Negm

Sales Manager

✉ [mohamed@alsarawatco.com](mailto:mohamed@alsarawatco.com)

☎ +2 01062223399

### Eng. Ahmed Negm

Projects Manager

✉ [ahmed@alsarawatco.com](mailto:ahmed@alsarawatco.com)

☎ +2 01005119100

---

Mokattam, South (S) zone, Khazzan St., Plot No. 9453, Cairo, Egypt.

**Tel:** +20-2-28410447, +20-2-28410448, +20-2-28410449. **Fax:** +20-2-28410446.

**P.O.Box:** 164 Mokattam Post Office. **ZIP:** (11571). **Email:** [info@alsarawatco.com](mailto:info@alsarawatco.com)